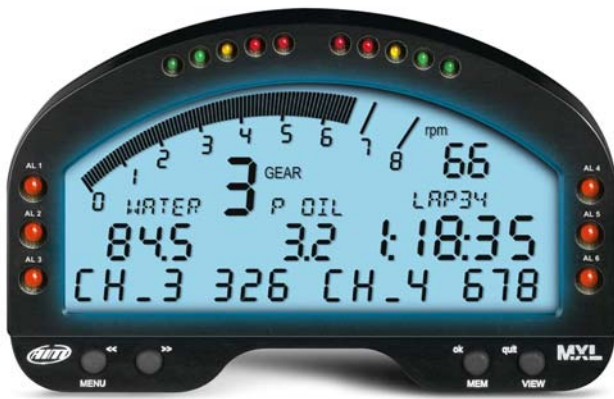
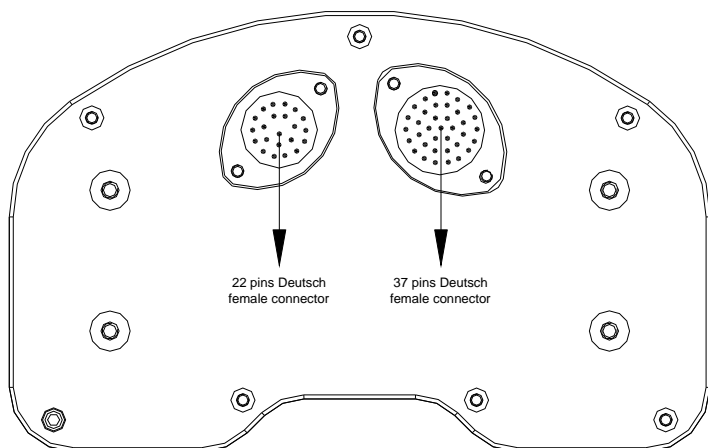


## MXL Pro05 Pinout




N.rev. / Rev. N.	Descrizione / Description	Data / date	Firma / Sign	Contr. da / Ckd. by
------------------	---------------------------	-------------	--------------	---------------------

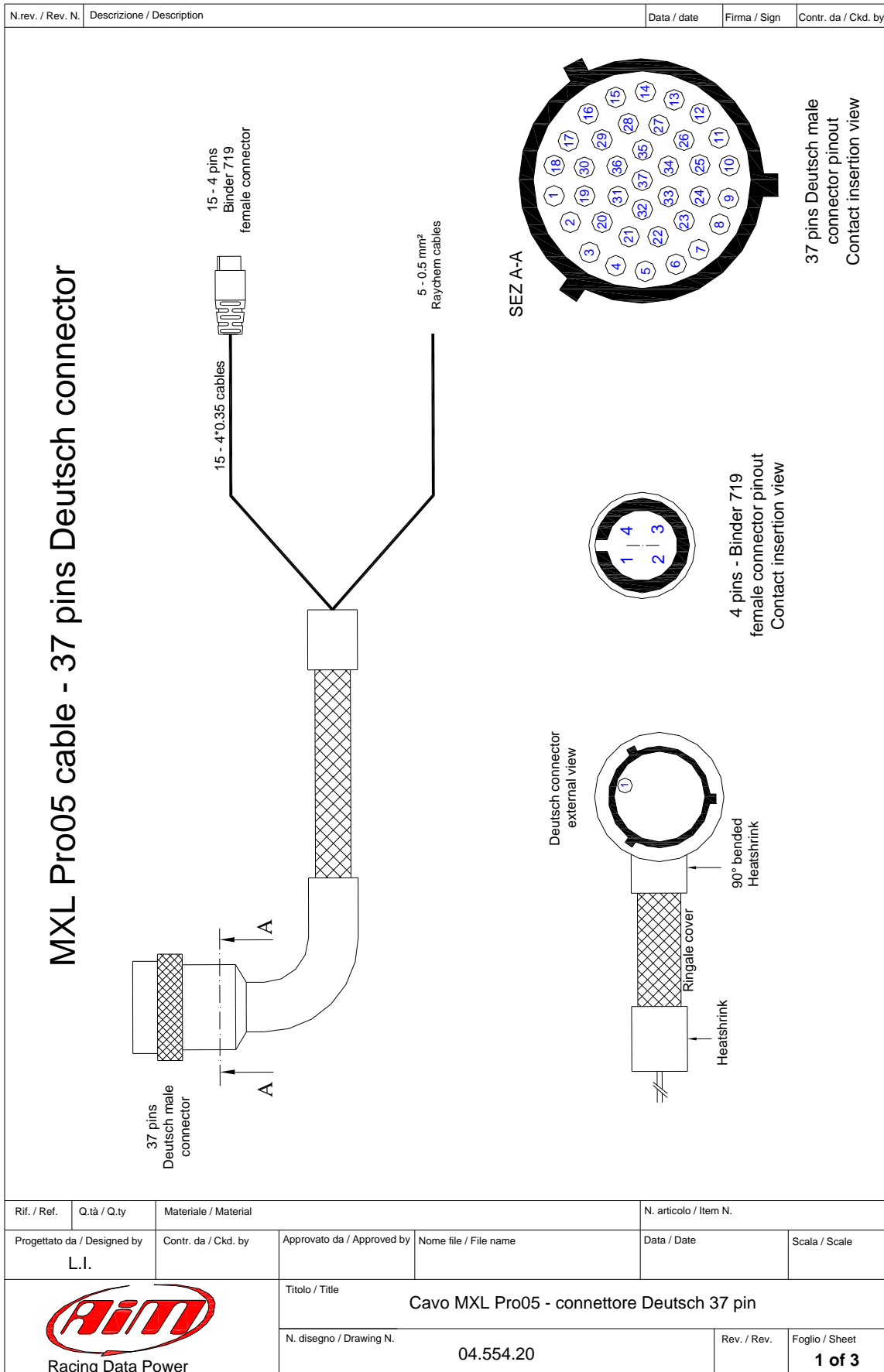
## MXL Pro05 pinout



22 pins Deutsch female connector pinout	
Pin	Function
1	+VB
2	GND
3	CAN 0+ for expansion modules
4	CAN 0- for expansion modules
5	Speed 3
6	Speed 4
7	USB D+
8	USB D-
9	GND
10	+ VB
11	GND
12	GND
13	+ VB
14	MEM
15	VIEW
16	Gear Flash
17	RS232RX for ECU interface
18	RS232TX for ECU interface
19	GND
20	CAN 1+ for ECU interface
21	CAN1- for ECU interface
22	9-15 V external power

37 pins Deutsch female connector pinout	
Pin	Function
1	9-15 V external power
2	Analog input 1
3	Analog input 2
4	Analog GND
5	Analog GND
6	V Reference
7	V Reference
8	Analog input 3
9	Analog input 4
10	Analog input 6
11	Analog GND
12	RPM square wave (>5V)
13	RPM coil input
14	+VB
15	GND
16	+VB
17	+VB
18	GND
19	Analog input 11
20	Analog input 12
21	V Reference
22	V Reference
23	Analog input 10
24	V Reference
25	Analog input 9
26	Analog input 8
27	Analog GND
28	GND
29	+VB
30	Speed 2
31	Analog GND
32	Analog input 5
33	Analog input 7
34	V Reference
35	Analog GND
36	Speed 1
37	Optical lap


Rif. / Ref.	Q.tà / Q.ty	Materiale / Material	N. articolo / Item N.	
Progettato da / Designed by	Contr. da / Ckd. by	Approvato da / Approved by	Nome file / File name	Data / Date
L.I.				Scala / Scale
		Titolo / Title		
		Pinout MXL Pro05		
N. disegno / Drawing N.			Rev. / Rev.	Foglio / Sheet
				<b>1 of 1</b>



N.rev. / Rev. N.	Descrizione / Description	Data / date	Firma / Sign	Contr. da / Ckd. by
------------------	---------------------------	-------------	--------------	---------------------

## Table of channels cabled with Binder 719

Channel	Binder pin	Cable colour	Deutsch pin	Connection	Lenght
Ch. 1	1	White	2	+ Analog input 1 Analog GND	340 mm
	2	Black	4		
	3	Red			
	4	Blue	21	+ V reference	
Ch. 2	1	White	3	+ Analog input 2 Analog GND	340 mm
	2	Black	4		
	3	Red			
	4	Blue	21	+ V reference	
Ch. 3	1	White	8	+ Analog input 3 Analog GND	360 mm
	2	Black	5		
	3	Red			
	4	Blue	6	+ V reference	
Ch. 4	1	White	9	+ Analog input 4 Analog GND	360 mm
	2	Black	5		
	3	Red			
	4	Blue	6	+ V reference	
Ch. 5	1	White	32	+ Analog input 5 Analog GND	380 mm
	2	Black	31		
	3	Red			
	4	Blue	7	+ V reference	
Ch. 6	1	White	10	+ Analog input 6 Analog GND	380 mm
	2	Black	31		
	3	Red			
	4	Blue	7	+ V reference	
Ch. 7	1	White	33	+ Analog input 7 Analog GND	400 mm
	2	Black	35		
	3	Red			
	4	Blue	34	+ V reference	
Ch. 8	1	White	36	+ Analog input 8 Analog GND	400 mm
	2	Black	35		
	3	Red	16	+VB	
	4	Blue	34	+ V reference	
Ch. 9	1	White	25	+ Analog input 9 Analog GND	420 mm
	2	Black	11		
	3	Red	16	+VB	
	4	Blue	24	+ V reference	
Ch. 10	1	White	23	+ Analog input 10 Analog GND	420 mm
	2	Black	11		
	3	Red	29	+VB	
	4	Blue	24	+ V reference	
Ch. 11	1	White	19	+ Analog input 11 Analog GND	440 mm
	2	Black	27		
	3	Red	29	+VB	
	4	Blue	22	+ V reference	
Ch. 12/ Gear	1	White	20	+ Analog input 12 Analog GND	440 mm
	2	Black	27		
	3	Red			
	4	Blue	22	+ V reference	

Rif. / Ref.	Q.tà / Q.ty	Materiale / Material	N. articolo / Item N.		
Progettato da / Designed by <b>L.I.</b>	Contr. da / Ckd. by	Approvato da / Approved by	Nome file / File name	Data / Date	Scala / Scale
 <b>Racing Data Power</b>		Titolo / Title <b>Cavo MXL Pro05 - Connettore Deutsch 37 pin</b>			
		N. disegno / Drawing N. <b>04.554.20</b>	Rev. / Rev.	Foglio / Sheet <b>2 of 3</b>	


N.rev. / Rev. N.	Descrizione / Description	Data / date	Firma / Sign	Contr. da / Ckd. by
------------------	---------------------------	-------------	--------------	---------------------

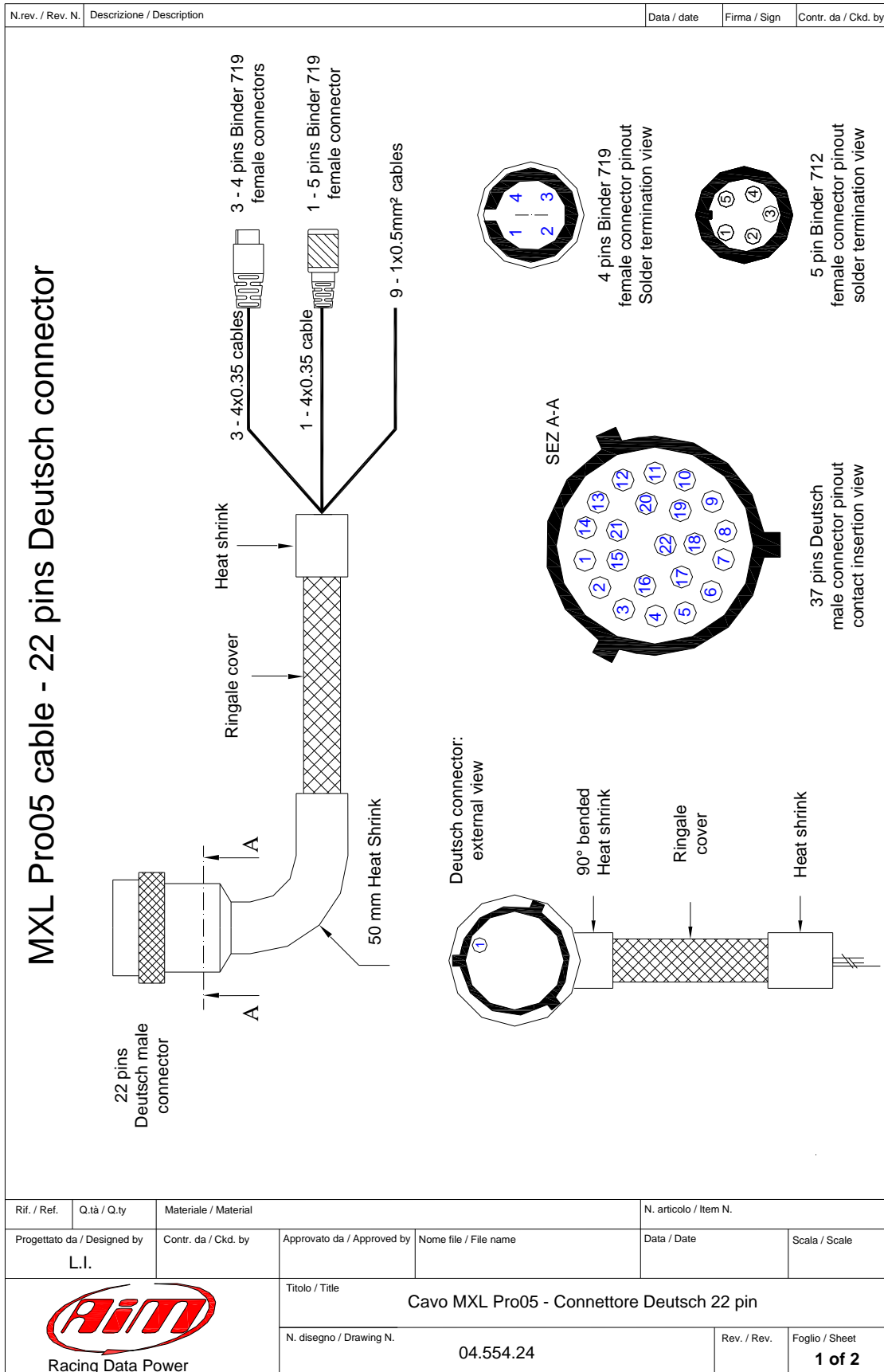
## Channels cabled with Binder 719 Continuation table of sheet 2

Channel	Binder pin	Cable colour	Deutsch pin	Connection	Lenght
Lap	1	white	37	Lap in	320 mm
	2	black	28	GND	
	3	red	14	+ VB	
	4	blue	37	Lap in	
Speed 1	1	white	36	Speed 1	320 mm
	2	black	28	GND	
	3	red	14	+ VB	
	4	n.c.			
Speed 2	1	white	30	Speed 2	320 mm
	2	black	28	GND	
	3	red	14	+ VB	
	4	n.c.			

## Table of not cabled channels

Not cabled channels	Cable colour	Deutsch pin	Connection	Lenght
RPM	white	13	RPM Coil	520 mm
	black	18	GND	
	blue	12	Square wave >5 V	
Power	black	15	GND	520 mm
	red	1	9-15 V Power IN	

Rif. / Ref.	Q.tà / Q.ty	Materiale / Material		N. articolo / Item N.		
Progettato da / Designed by L.I.		Contr. da / Ckd. by	Approvato da / Approved by	Nome file / File name	Data / Date	Scala / Scale
		Titolo / Title Cavo MXL Pro05 - Connettore Deutsch 37 pin				
		N. disegno / Drawing N. 04.554.20		Rev. / Rev.	Foglio / Sheet 3 of 3	



N.rev. / Rev. N.	Descrizione / Description	Data / date	Firma / Sign	Contr. da / Ckd. by
------------------	---------------------------	-------------	--------------	---------------------

## Channels ending with Binder 719


Channel	Binder Pin	Cable colour	Deutsch pin	Connection	Lenght
USB	1	white	7	USB D+ GND USB D-	1100 mm
	2	black	9		
	3	red	8		
	4	n.c.			
Speed 3	1	white	5	Speed 3 GND + VB	300 mm
	2	black	11		
	3	red	10		
	4	n.c.			
Speed 4	1	white	6	Speed 4 GND + VB	300 mm
	2	black	11		
	3	red	10		
	4	n.c.			

## Channel ending with Binder 712

Channel	Binder pin	Cable colour	Deutsch pin	Connection	Lenght
Expansion	1	white black red blue	3	CAN 0+ GND + VB CAN 0- NC	350 mm
	2		2		
	3		13		
	4		4		
	5				

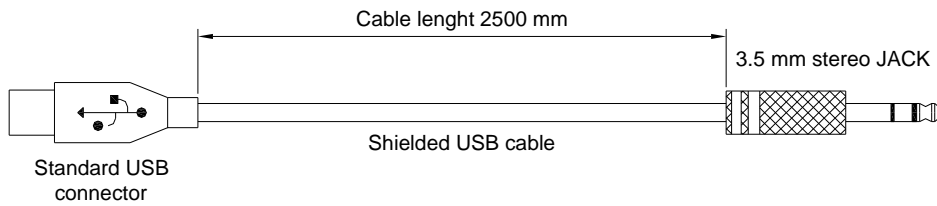
## Not cabled channels table

Not cabled Channels	Cable colour	Deutsch pin	Connection	Lenght
Keyboard	white black blue	14	MEM GND VIEW	550 mm
		12		
		15		
CAN	white black blue	20	CAN + GND CAN -	550 mm
		19		
		21		
RS 232	white black blue	17	RS 232 RX GND RS 232 TX	550 mm
		19		
		18		

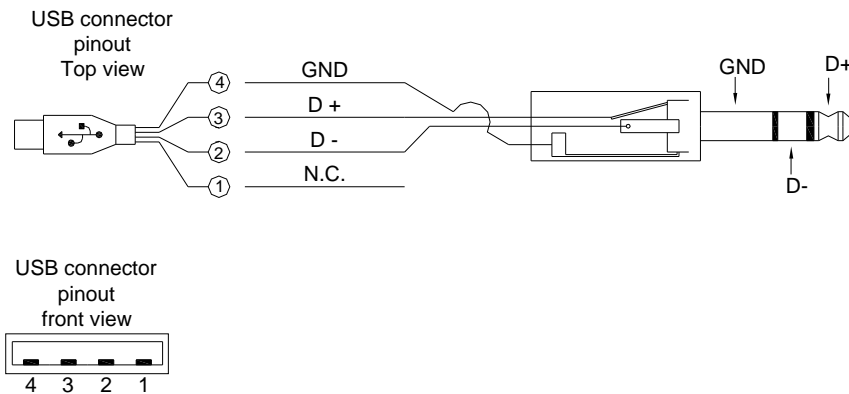
Rif. / Ref.	Q.tà / Q.ty	Materiale / Material		N. articolo / Item N.	
Progettato da / Designed by	Contr. da / Ckd. by	Approvato da / Approved by	Nome file / File name	Data / Date	Scala / Scale
L.I					
		Titolo / Title Cavo MXL Pro05 - Connettore Deutsch 22 pin			
		N. disegno / Drawing N. 04.554.24		Rev. / Rev.	Foglio / Sheet 2 of 2


N.rev. / Rev. N.	Descrizione / Description	Data / date	Firma / Sign	Contr. da / Ckd. by
------------------	---------------------------	-------------	--------------	---------------------

## USB cable for data download - 3.5 mm stereo Jack



## Pin connection



Rif. / Ref.	Q.tà / Q.ty	Materiale / Material	N. articolo / Item N.		
Progettato da / Designed by	Contr. da / Ckd. by	Approvato da / Approved by	Nome file / File name	Data / Date	Scala / Scale
		Titolo / Title Cavo USB per scarico dati - Jack da 3.5 mm stereo			
		N. disegno / Drawing N. 04.554.30	Rev. / Rev.	Foglio / Sheet 1 of 1	